

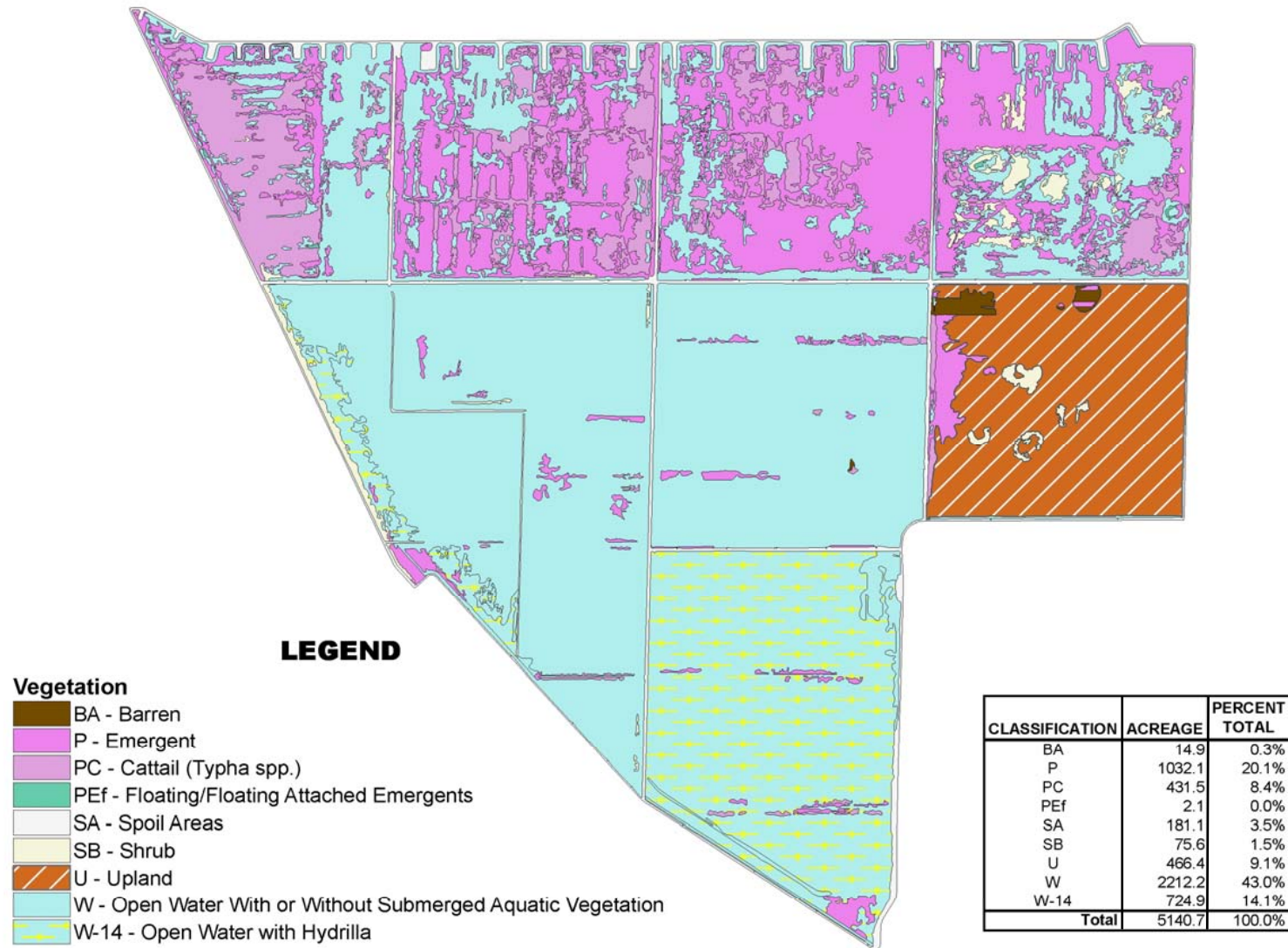
# **Appendix 5-2:**

## **STA Vegetation Maps**

Erin Fogarty-Kellis

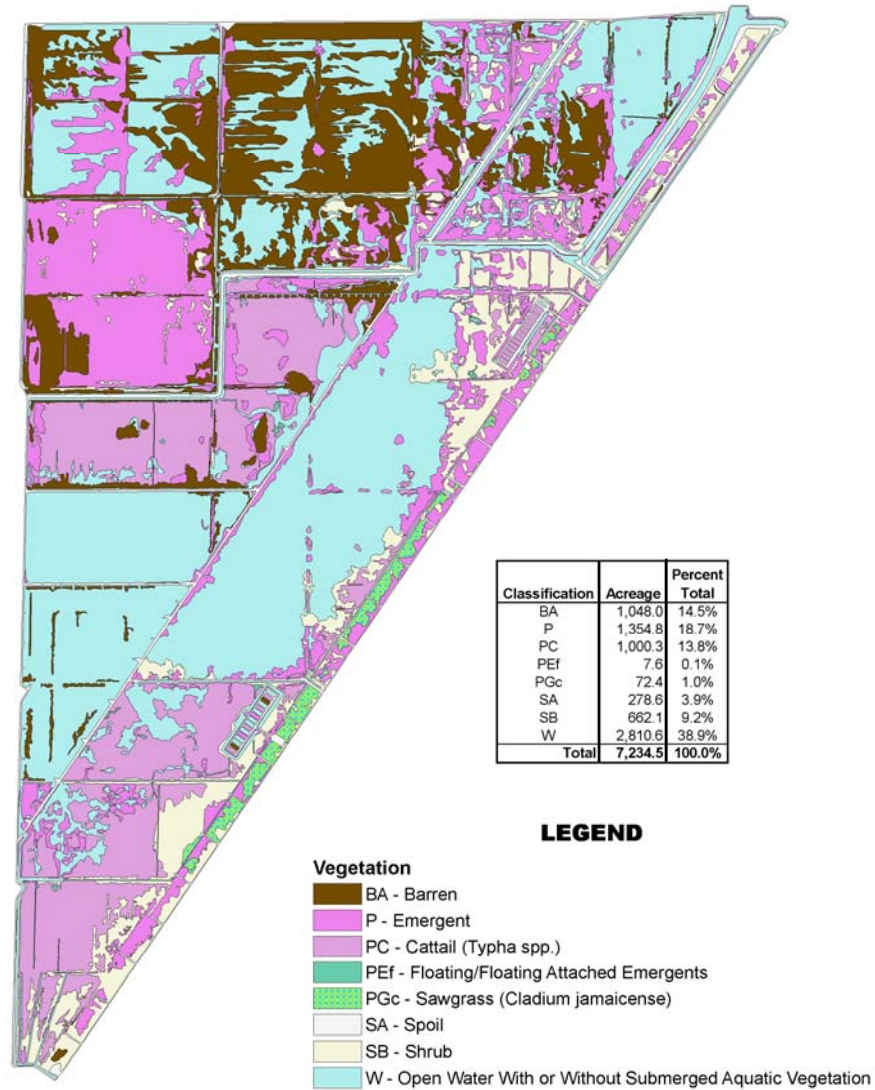
# STA-1E 2006 Vegetation Map

*Aerial imagery flown March 25, 2006*



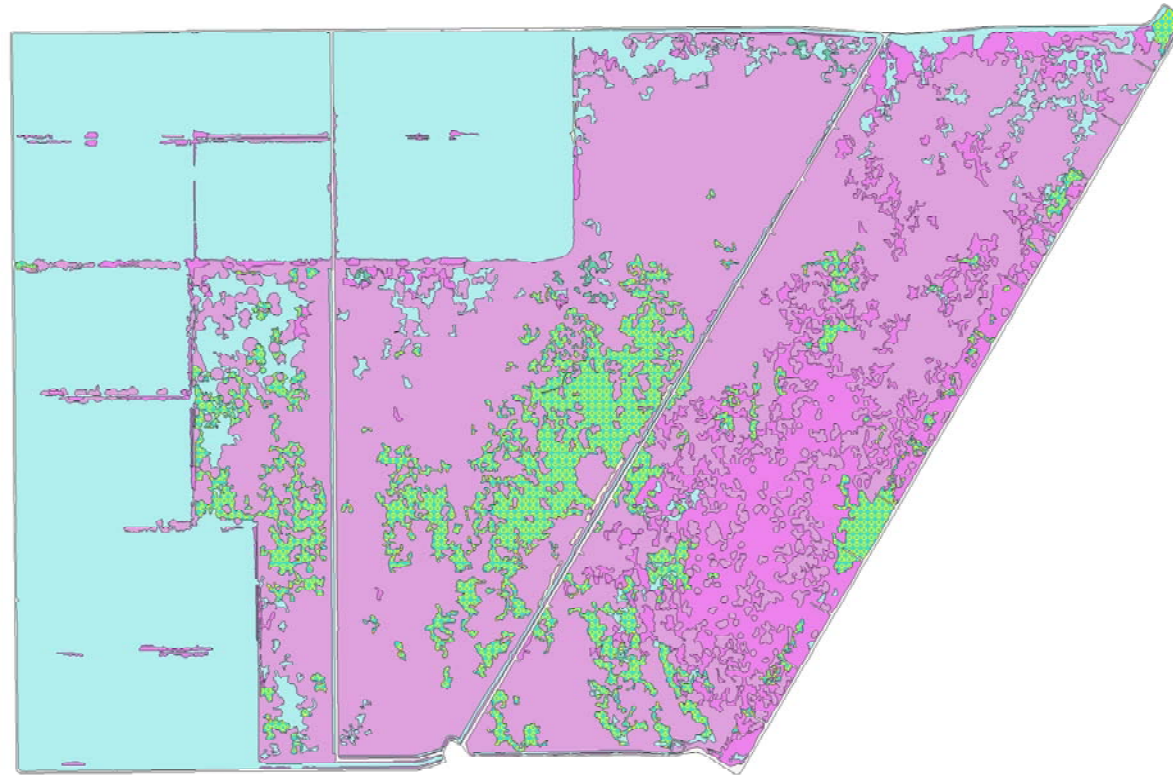
## STA-1W 2006 Vegetation Map

*Aerial imagery flown March 25, 2006*



## STA-2 2006 Vegetation Map

*Aerial imagery flown March 25, 2006*



### LEGEND

#### Vegetation

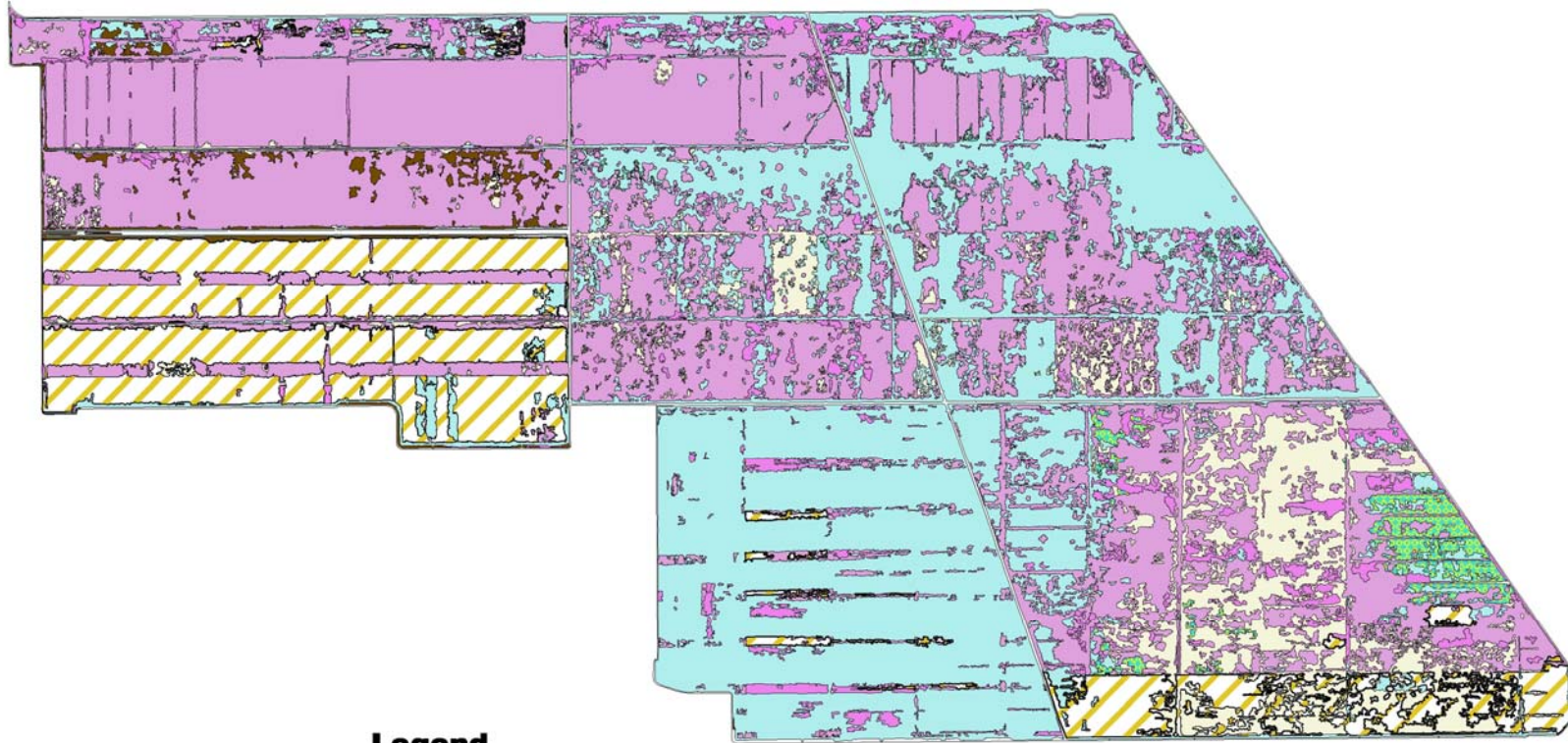
- P - Emergent
- PC - Cattail (*Typha* spp.)
- PEf - Floating/Floating Attached Emergents
- PGc - Sawgrass (*Cladium jamaicense*)
- SA - Spoil
- SB - Shrub
- W - Open Water With or Without Submerged Aquatic Vegetation

Classification	Acreage	Percent Total
P	633.76	9.30%
PC	2,953.26	43.34%
PEf	8.82	0.13%
PGc	539.55	7.92%
SA	119.90	1.76%
SB	5.78	0.08%
W	2,553.24	37.47%
<b>Total</b>	<b>6,814.32</b>	<b>100.00%</b>



## STA-3/4 2006 Vegetation Map

*Aerial imagery flown March 25, 2006*



### Legend

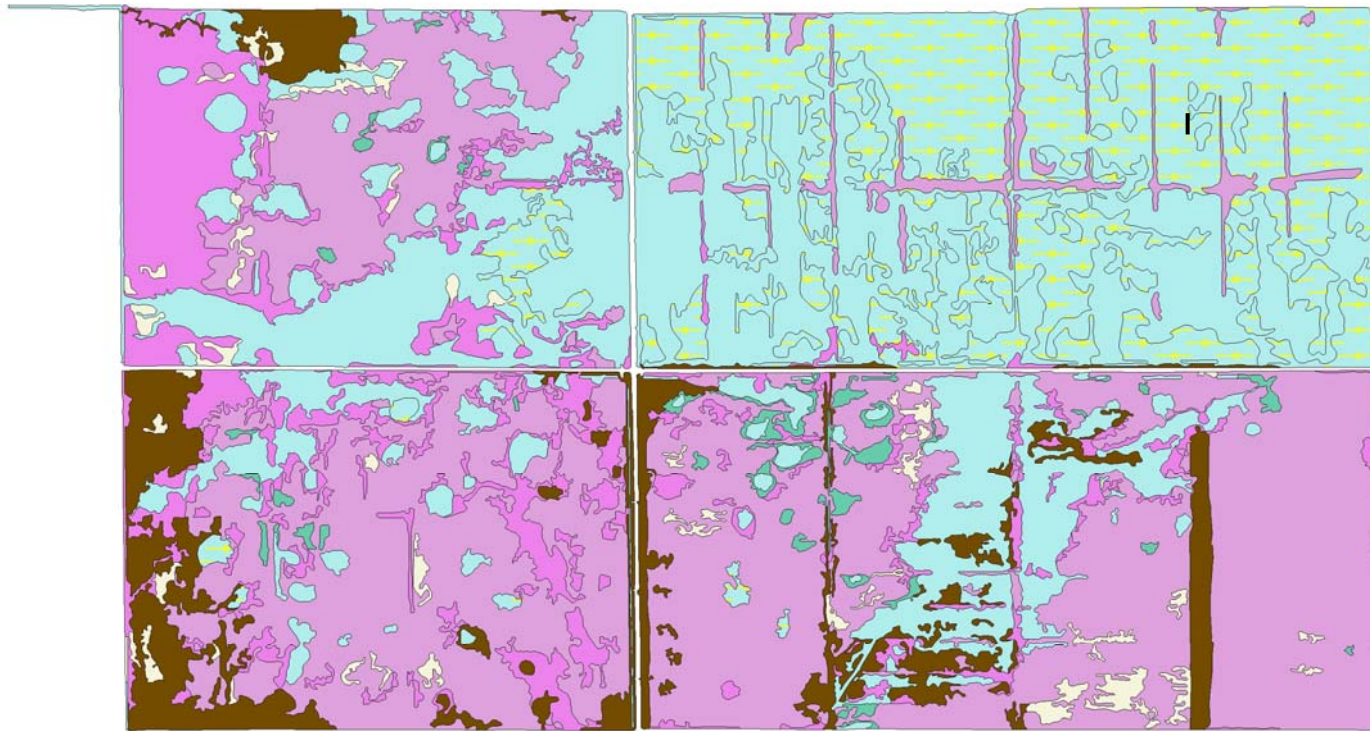
#### Vegetation

- BA - Barren
- P - Emergent
- PC - Cattail (*Typha* spp.)
- PEf - Floating/Floating Attached Emergents
- PGc - Sawgrass (*Cladium jamaicense*)
- SA - Spoil
- SB - Shrub
- TA - Treated Area
- W - Open Water With or Without Submerged Aquatic Vegetation

CLASSIFICATION	ACREAGE	PERCENT TOTAL
BA	162.0	1.0%
P	685.0	4.3%
PC	6,371.4	39.6%
PEf	49.9	0.3%
PGc	175.6	1.1%
SA	267.9	1.7%
SB	1,378.5	8.6%
TA	2,034.8	12.7%
W	4,947.4	30.8%
<b>TOTAL</b>	<b>16,072.5</b>	<b>100.0%</b>

## STA-5 2006 Vegetation Map

*Aerial imagery flown March 25, 2006*



### LEGEND

#### Vegetation

- BA - Barren
- P - Emergent
- PC - Cattail (*Typha* spp.)
- PEf - Floating/Floating Attached Emergents
- SB - Shrub
- W - Open Water With or Without Submerged Aquatic Vegetation
- W-14 - Open Water with Hydrilla (*Hydrilla verticillata*)

CLASSIFICATION	ACREAGE	PERCENT TOTAL
BA	292.4	7.1%
P	423.4	10.3%
PC	1,493.4	36.2%
PEf	46.0	1.1%
SB	72.9	1.8%
W	1,081.5	26.2%
W-14	717.2	17.4%
<b>TOTAL</b>	<b>4,126.7</b>	<b>100.0%</b>



## STA-6 2006 Vegetation Map

*Aerial imagery flown March 25, 2006*

